

Garden Talk™

San Diego's Garden Resource



WALTER ANDERSEN
NURSERY™

San Diego's Independent Nursery Since 1928™

Time To Think About Fall Pumpkins

BY MELANIE POTTER

Every fall we make our annual trek to Bates Nut Farm where I get such a kick at looking at the pumpkin patch.

If you didn't know it already, pumpkins need a lot of room to grow, but that won't deter me because this year I am determined to plant seeds somewhere. The problem is that May/June is the time to plant if you want a Halloween harvest and the garden is already full of spring and summer crops.

I even have the pumpkin variety picked out that I'm going to plant and a few quick looks at blogs have revealed that my choice, Jarrahdale, is the perfect pumpkin to plant. First of all, it is eye catching, not orange, but blue (ok a grayish slate color that is described by pumpkin lovers as blue) and has the look of a fairy tale pumpkin, which has become more popular over the years as consumers seek choices other than the standard orange pumpkin soon to be jack-o-lantern.

Jarrahdale is an Australian native and large, weighing between 6-10 pounds. It is flat shaped with heavy, rounded ribs. Some report that its flesh smells like fresh cucumber or melon and it has medium sweetness, thick orange flesh of good quality and a long storage capability. It's



Photo: Leslie Devereux

good in soups, pies, and breads, or roasted.

Plant in full sun in well draining soil; mounding the soil into hills. For best results, dig a large hole (2'-4' x 2'-4') and fill with a soil rich in organic matter and a handful of Gro Power All Organic Soil Conditioner and some vegetable food. The richer the soil, the greater the harvest. Water regularly, a good soaking, as roots run deep. Jarrahdale pumpkins take about 100 days to mature.

If a Jarrahdale pumpkin doesn't interest you, think about these other unusual varieties: Lumina, Cinderella, or Fairytale. Big Max pumpkins are big, as are Dill's Atlantic Giant which grows to more than 100 pounds. These are some popular favorites: Sugar Pie, Jack Be Little, and Howden.

Editor's Note: Both stores carry these pumpkin seeds. Don't miss the giant pumpkin growing class July 7 at the San Diego store. ■

Hass-Related Avocados May Be Bigger & Better

BY MELANIE POTTER

Two new avocados have made their way to the nursery and look as if they will give the beloved Hass a run for its money, as well as become players in the avocado industry. There are close to 500 varieties of avocados, seven varieties are grown commercially in California, and the Hass variety accounts for approximately 95 percent of the total crop.

Welcome 'Lamb Hass' and 'Sir Prize'. While Hass avocados are the most popular of avocados, they can be alternate bearing and they are prone to mites. 'Sir Prize' looks most

Hass-like than previous commercial avocados of its type. The black skin, which signals its ripeness, and ovoid shape, will reassure consumers that it is akin to Hass. The larger-than Hass fruit matures nearly 6-8 weeks earlier than Hass and as it is classified as a Mexican avocado, it is more cold resistant. Its flower type is B so it will work as a pollinator for Lamb, Gwen and Hass trees.

It is speculated that 'Sir Prize' may show potential as an alternative to 'Zutano' for San Joaquin Valley growers.

Lamb Hass is a summer variety avocado and was developed to extend the season of the Hass. It matures late June through October. The look and taste is similar to Hass and according to the California Avocado

continued p2

In This Issue

Think About Fall Pumpkins	1
Hass-Related Avocados	1
San Diego Fair Display	1
June Garden Tasks	2
Wee Corner: Leaves & Bugs	2
Spring Rose Show Winners	3
June Garden Classes	3
Hedge Fund\$ Points	3

Discover Us!



www.walterandersen.com



facebook.com/walterandersens



twitter.com/walterandersens



[Our Online Store](#)



[Watch Videos](#)

Watch For Our 2012 San Diego Fair Display!



The annual San Diego County Fair doesn't kick off until June 8, but we are already hard at work on the nursery's exhibit. In keeping with this year's theme, Out of This World, the exhibit will feature a water display and some "Out of This World" plants found on this planet. A sneak preview of the exhibits being constructed revealed that if you like succulents, you won't want to miss this year's Flower and Garden Show. Shown here are folks from Advanced Waterscapes who are once again installing a water feature for Walter Andersen's exhibit. The nursery is the longest running exhibitor at the fair—a tradition we began in 1937. Learn more about Advanced Waterscapes by visiting <http://www.advancedwaterscape.com>. ■

HASS AVOCADOS

continued from p1

Commission, it has an exceptional flavor and a large robust size. It does have a square looking top which distinguishes it from Hass. This avocado was developed in Camarillo in 1985.

To plant, you'll need a space of 10–20 feet in circumference. The soil should be well draining and the area needs to be in full sun with protection from wind and frost. Water regularly and feed with GroPower Citrus & Avocado food. You can plant avocados year round but March through June is the ideal time. If you notice the leaves turning brown or having burnt edges, too much salt has accumulated in the soil. You can aid that by periodically watering longer than usual to leach the salts from the soil. ■

June Garden Tasks

FERTILIZE

For lawns, use Marathon Fertilizer for Tall Fescue or Scott's Turf Builder or Turf Builder Plus 2 to feed and control broadleaf weeds. Feed ornamentals with Gro Power. Feed Vegetables with Gro Power Tomato and Vegetable Food or Dr. Earth Organic Tomato and Vegetable Food. Feed Citrus, Avocado, and Fruit Trees with Gro Power Citrus and Avocado Food. Feed Palms and Tropicals with Gro Power Palm Tree and Tropical Food.

PRUNE

Prune ornamentals for shape. Dead head Roses and other flowering plants.

PEST CONTROL

Look for slugs and snails, apply Sluggo and Sluggo Plus. Watch for mildew, rust and rose slug on Roses. And watch for sowbugs, earwigs, and cutworms in vegetable gardens. Keep flies around trash cans under control. Immunox Plus will take care of them all.

PLANTING

Plant bedding plants, Bougainvillea, tropicals, trees and shrubs.

WATER

With longer and warmer days, make sure plants get enough water, especially lawns.

LOOK FOR:

Jacaranda, Roses, Magnolias, Star Jasmine, Fuchsias, Dipladenias, and Hydrangeas. ■

Wee Corner: Baggies of Leaves & Bugs

BY MELANIE POTTER

Spring is the busiest season at the nursery. The number of customers increases and many are armed with plastic baggies of leaves and bugs. Here's a look at what is in many of those bags and how to get rid of what is ailing your plants.

APHIDS



You'll find these soft bodied wee pests on your edibles and ornamentals, especially on new growth. They can be green, yellow, or black depending upon the species. Aphids are sucking insects and their feeding causes leaves to crinkle and flower buds may become hardened causing the flowers to be distorted. Aphids excrete honeydew, which attracts ants and is a medium for growth of black fungus called sooty mold. You'll find aphids by turning leaves over and seeing congregations of them on the underside, or they will be lined up on the stems and stalks of plants. If they have infested your ornamentals, spray with Bayer All in One Rose & Flower systemic or Bayer 3 in 1 Insect, Disease & Mite Control. On edibles, use Bayer Fruit, Citrus & Vegetable Insect Control or, for an organic choice, use Neem oil.

ROSE SLUG



We're seeing samples of rose foliage with holes in it or leaves that are being skeletonized. When we turn the leaf over, it's likely we'll also see a small green worm, or caterpillar looking culprit which is the larvae of sawflies. Spray your roses with Bayer All in One or 3 in 1.

POWDERY MILDEW & RUST



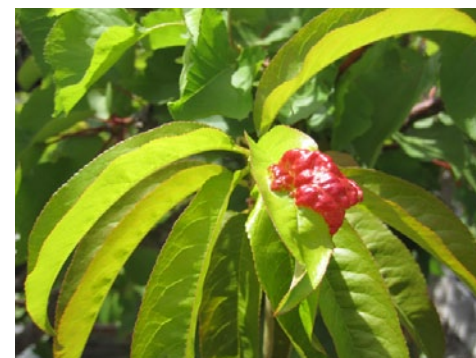
Powdery Mildew

Rust



Powdery mildew is a fungal disease, often seen on roses, that makes the leaves of the roses look silvery. If you have a severe case of it, spray with Bayer All in One or 3 in 1. If it is on your edibles, spray with Neem oil. The same Bayer products will also take care of rust, a fungus, which is identified as a rust color on plant leaves and stems. The rust will start out as orange colored flecks and will eventually grow into bumps.

PEACH LEAF CURL



This is a disease called *Taphrina deformans* and it will actually deform the leaves of your peach and nectarine trees. Leaves will curl and may turn red or purple. A mild case won't harm your tree but if it becomes severe, the fungus may spread to new growth, fruit and blossoms. Unfortunately, the time to treat this has passed as its cure is a spraying of Monterey Liqui Cop or Daconil in fall and winter. ■



2012 Spring Rose Show Winners

Here's a list of winners at the 13th annual Poway Rose Show. And watch for Fall Rose Show details!

BEST HYBRID TEA OR GRANDIFLORA
Isis Mast with Gemini

BEST SINGLE STEM FLORIBUNDA
Sandy Campillo with Julia Child

BEST OLD FASHIONED ROSE
Marilyn Wojdak with Gruss an Aachen

BEST MINIATURE / MINI FLORA
Pete Bompensiero with Tulsa Town

BEST MINI FLORA / MINI SPRAY
Jack Edmonson with Sonia Sunblaze

BEST BOUQUET
Kristi Sutherlin with Jude the Obscure and Hot Cocoa

BEST MINI FLORA / MINI BOUQUET

Sandy Campillo with Magic Carousel

BEST FLOATING BOWL

Sandy Campillo with Marilyn Monroe

BEST MINI FLORA / MINI FLOATING BOWL

Pete Bompensiero with Tulsa Town

MOST FRAGRANT ROSE

Tom Schift with Mr. Lincoln

BEST FULLY OPEN VARIETY

Jack Edmonson with Marilyn Monroe

BEST NON-CLASSIFIED ROSE

Jack Edmonson with Sally Holmes

ANDERSEN'S CHOICE AWARD FOR BEST NON-AWARDED ROSE

Jack Edmonson with Chihuly

QUEEN OF SHOW

BEST HORTICULTURE ENTRY

Sandy Campillo with Marilyn Monroe ■

June Garden Class Schedule

All Saturday classes are FREE and last about an hour. Complimentary coffee is served. During inclement weather, classes are held indoors in San Diego and on the covered, heated patio in Poway. Class topics are subject to change with no notification. You may call for confirmation.

SAN DIEGO NURSERY 9:00AM	POWAY NURSERY 9:30AM
6/2 Cymbidium Repotting	6/2 Sustainable Gardening
6/9 Tropical Plants	6/9 Tea and Health with John Harrison from Tea Gallerie
6/16 Native Plants	6/16 Summer Veggies
6/16 Grow with a Pro at 1pm. "Tasty & Unusual Herbs" with Carol Fuller	6/23 Gorgeous Gardens through Sprinkler Efficiency with Chris Ewell
6/23 Xeriscaping—Water Efficient Plantings	6/30 Composting
6/30 Children's Gardens	

Dates To Remember

FATHER'S DAY – Both stores open regular hours.

4TH OF JULY – Both stores closed.

Hedge Fund\$™ Points Are Here!

Redeem your Hedge Fund\$™ points for needed garden supplies during the month of June.

Redeem your points at either of our locations but be sure to do it before June 30th because on July 1st any unused points will disappear and cannot be replaced. ■



San Diego's Independent Nursery Since 1928™



www.walterandersen.com

Visit Our 2 Locations:

SAN DIEGO

3642 Enterprise Street, San Diego, CA 92110
{619} 224-8271

POWAY

12755 Danielson Court, Poway, CA 92064
{858} 513-4900



www.walterandersen.com



facebook.com/walterandersens



twitter.com/walterandersens



[Our Online Store](#)



[Watch Videos](#)

©2012 Walter Andersen Nursery